

## CLAUDE HORSTMANN – *extra stone next surface*



Exhibition view: **CLAUDE HORSTMANN – *extra stone next surface***, 2024, Laura Mars Gallery  
Photos by Martin Eberle

The exhibition shows works by the artist that examine material phenomena as well as sculptural gestures and conditions.

In addition to 3D-cutted sculptures made of black marble, concrete and stone, conglomerate and chrome also come into play. The plastic potential of various materials - some of which are derived from urban contexts - is also analysed, translated and condensed in drawing and textual work.

A specific terrain is always physical, scientific-physical, but also mental and imaginary.

The focus is on form and non-form, on substance and surface, on energetic trace. Here, the examination of materiality, abstraction and transformation probes a 'geology of the present', also touching on border areas of the material.

In the exhibition, sculpture and drawing as well as textual work correspond with each other and are complemented by the publication AIRE (Fantôme Verlag), in which the artist concentrates photographic images on the materiality and minerality of urban, cultural and nature-like space.

The conceptual translation into different media and formats opens up a field of precise references between the works.

**Claude Horstmann** lives and works in Stuttgart and Marseille. She studied Art Sciences at the University of Osnabrück and Fine Arts at the Stuttgart State Academy of Art and Design. Exhibitions and residencies in Germany and abroad, various grants and stipends.



Exhibition view: **CLAUDE HORSTMANN** – *extra stone next surface*, 2024, Laura Mars Gallery  
Photos by Martin Eberle



Still, 2024, alabaster, stone plinth, metal plinth, 32 x 37 x 29 cm (sculpture, stone plinth), 90 x 46 x 46 cm (metall plinth)





everything will be chrome, 2024  
stone, cement, chrome, metal plinth, 22 x 28 x 26 cm (sculpture), 90 x 40 x 40 cm (plinth)





Route de gravat, 2022, black marble Marquina Nero, 14 x 44,5 x 21 cm





Traverse I, 2022, black marble Marquina Nero, 35 x 34 x 39 cm (sculpture), 90 x 62 x 62 cm (metal plinth)



Traverse I, 2022, black marble Marquina Nero (detail)





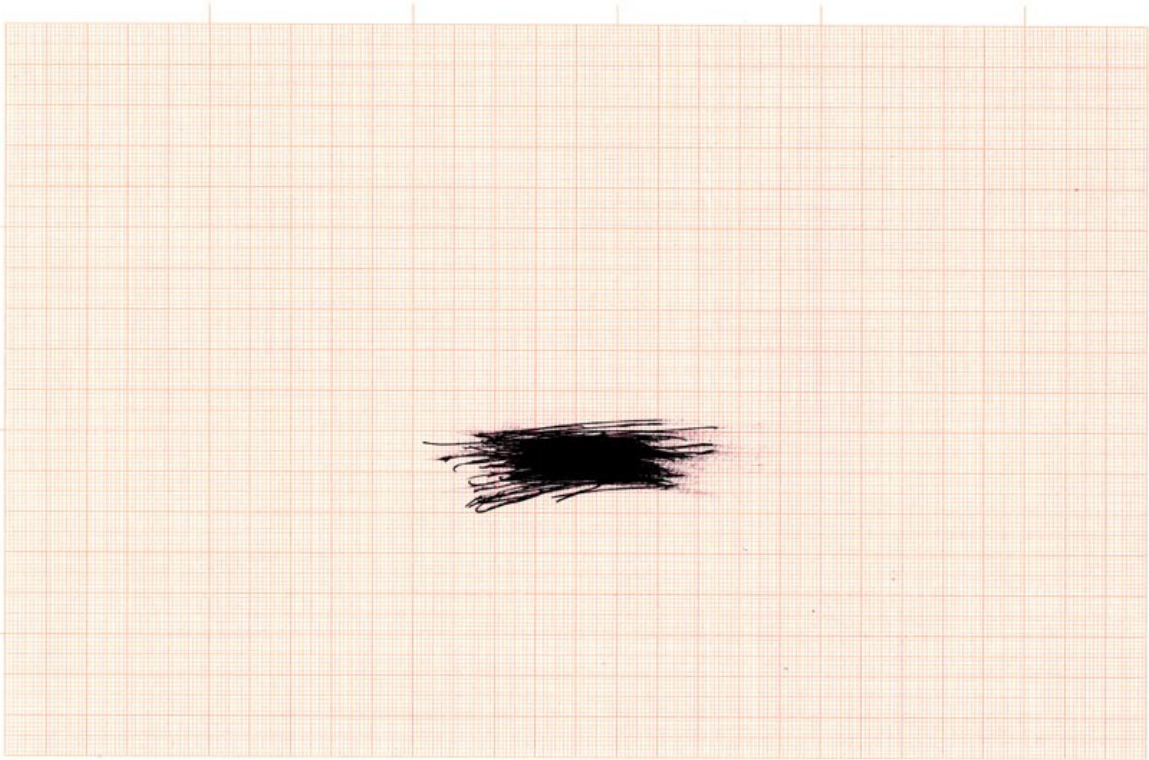
untitled, 2023, black marble Marquina Nero, 24 x 46 x 20 (sculpture), 86 x 60 x 64 cm (metal plinth)



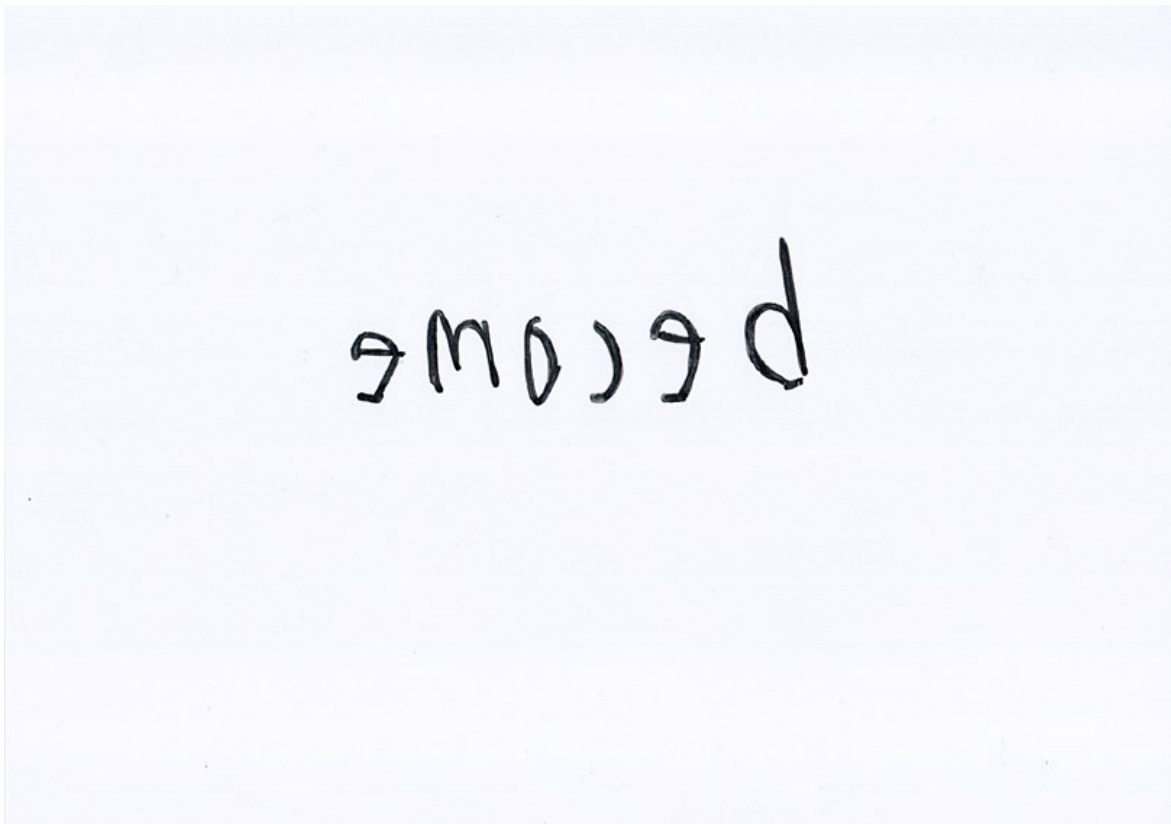
untitled, 2023, black marble Marquina Nero (detail)



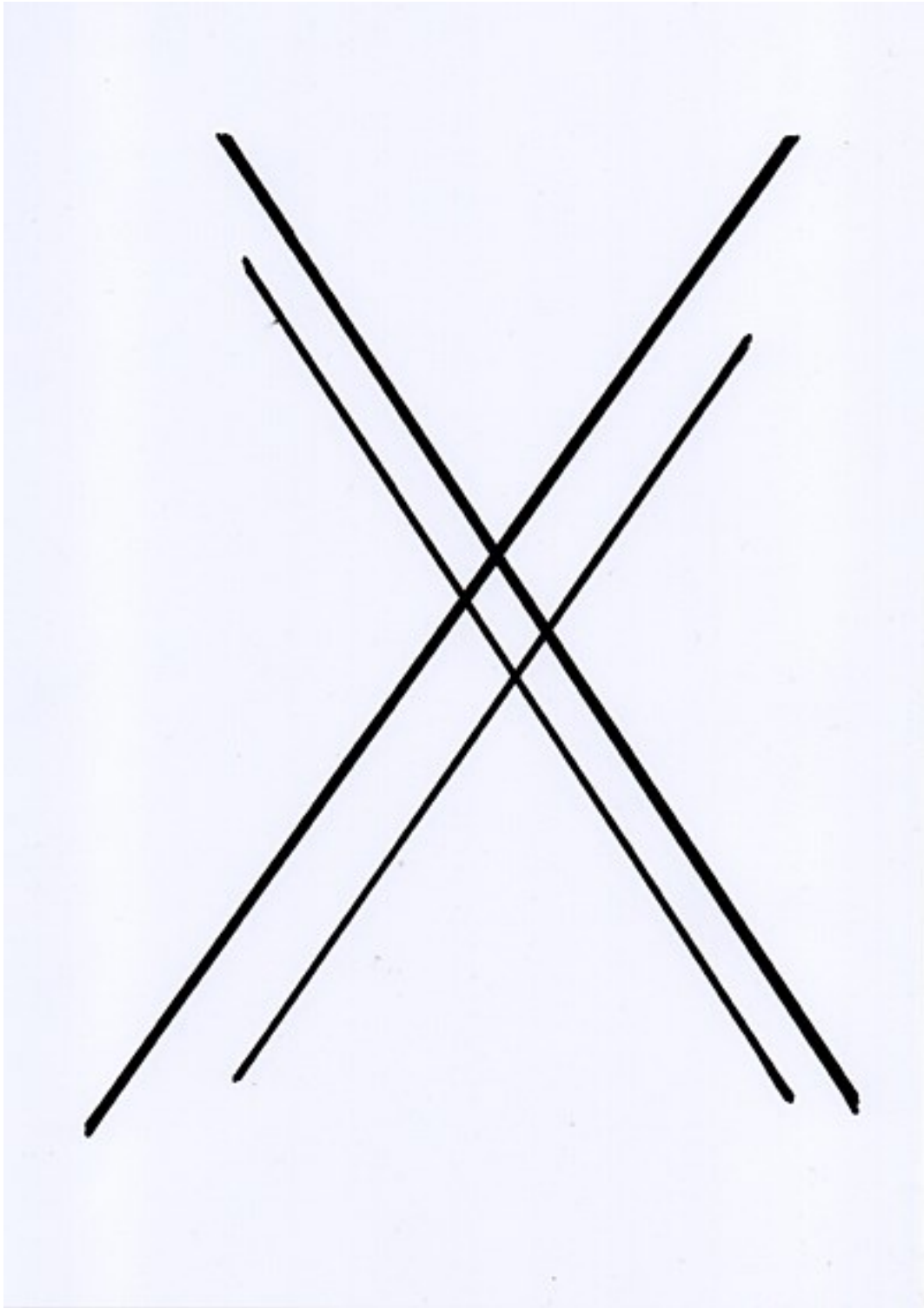
various drawings, formats DIN A4 - DIN A2, different materials on drawing foil and paper, 2018 - 2024



untitled, 2020, ballpen on graph paper, 21 x 29,7 cm



untitled, 2024, chrome pencil on drawing foil, 21 x 29,7 cm



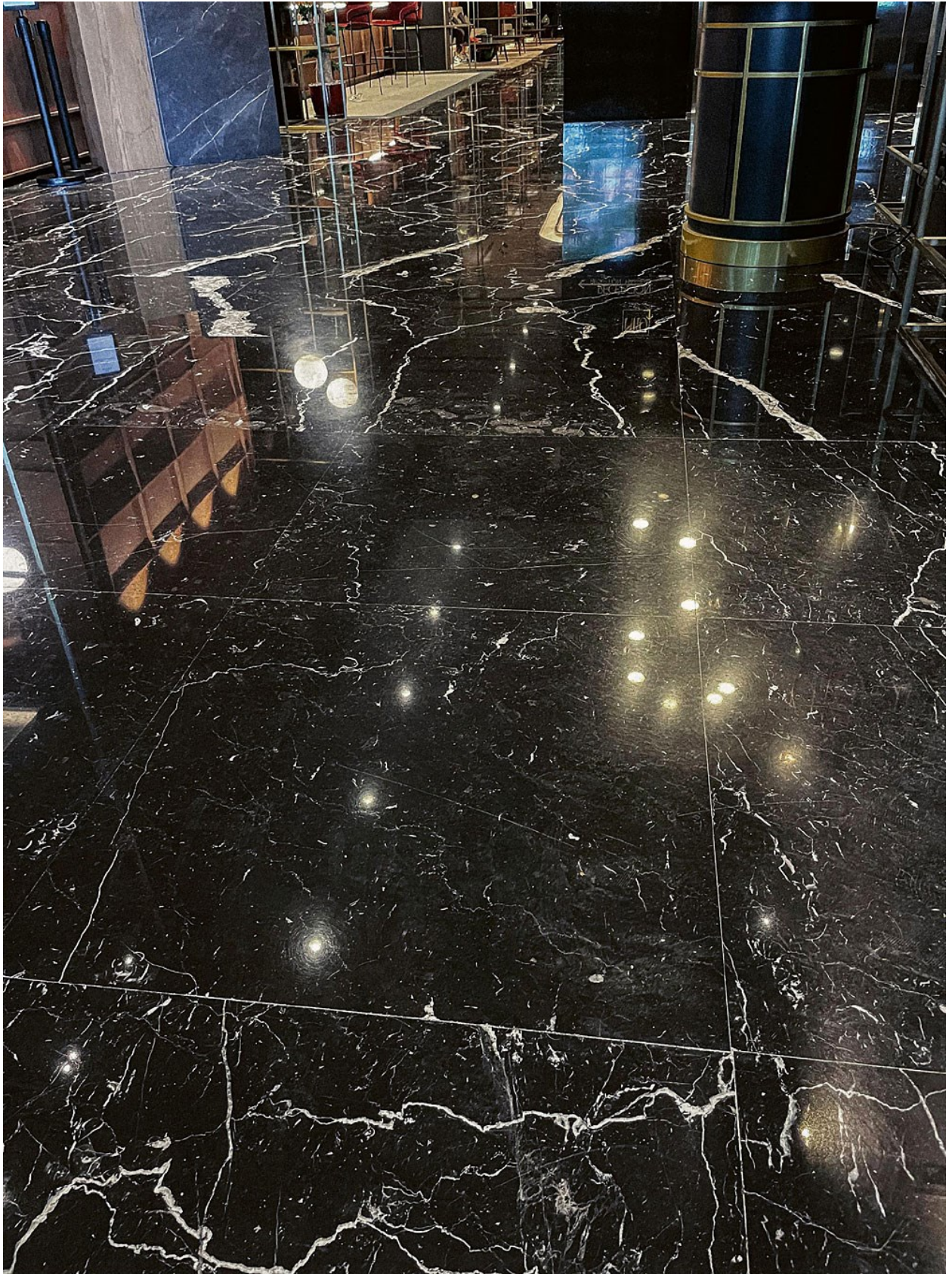
XX, 2024, paintmarker on drawing foil, 29,7 x 21 cm



Rue Colbert, 2024, graphite on marble, 4 x 16 x 25 cm



to record, 2019, fine art print on paper, 30 x 40 cm, edition 3 + 1 a.p.



black floor, 2023, offset print, 59,4 x 42 cm, edition 25 + 10 a.p.